

# PRORIL

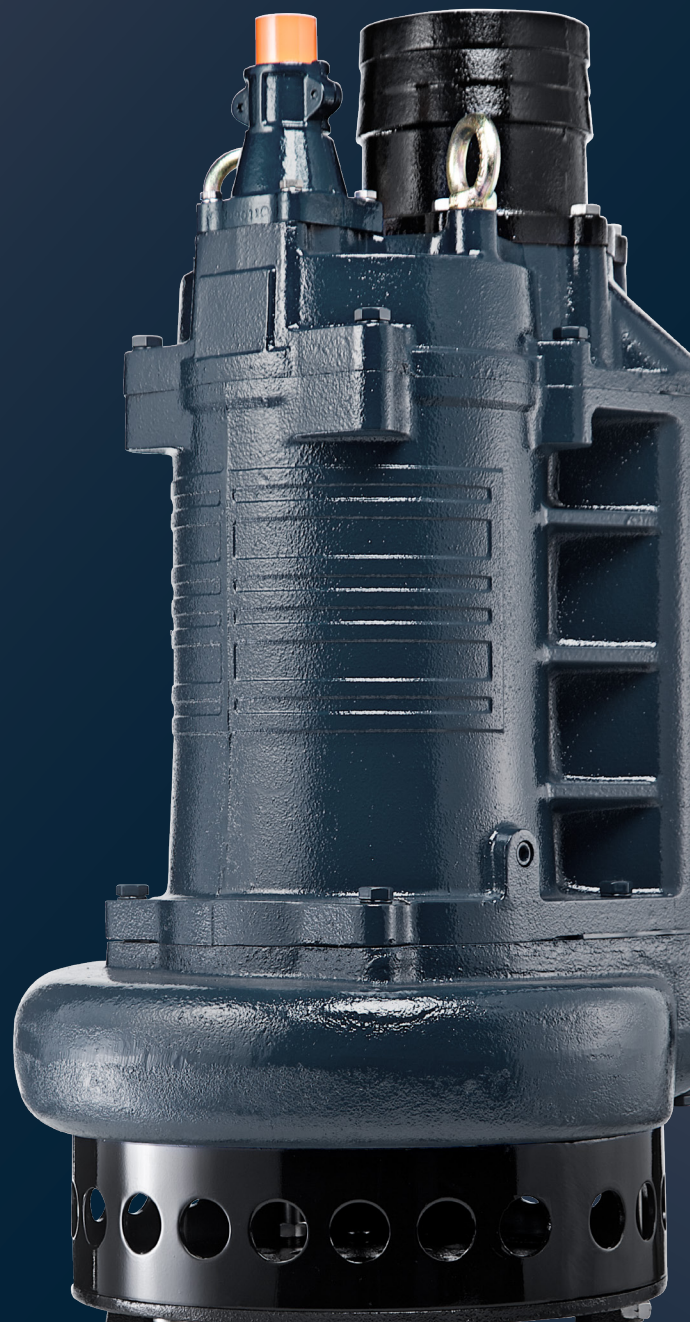
60Hz

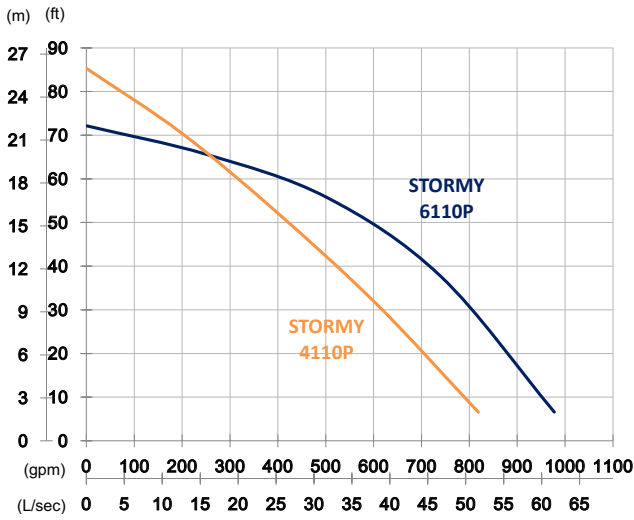
Serving a wide range of slurry transport applications, STORMY-P series pumps are designed for long wear life, low energy consumption, excellent performance, and easy maintenance. With patented ACrS Tech and rugged construction, these abrasion and corrosion resistant slurry pumps provide economical solutions for challenging slurry transportation.

## Slurry and Sand Pump

# STORMY 4110P/6110P

### Open Stand and Agitator Pump





	STORMY 4110P	STORMY 6110P
<b>OUTPUT</b>	15 HP (11 kW)	15 HP (11 kW)
<b>OUTLET</b>	4" (100 mm)	6" (150 mm)
<b>SOLID PASSAGE</b>	1" (25 mm)	1.4" (35 mm)
<b>Weight</b>	421 lbs/191 kg	423 lbs/192 kg
<b>HEAD</b>	Rated: 52 ft, 16 m Max: 85 ft, 26 m	Rated: 56 ft, 17 m Max: 72 ft, 22 m
<b>FLOW</b>	Rated: 396 gpm, 25 L/s Max: 819 gpm, 51.7 L/s	Rated: 502 gpm, 31.7 L/s Max: 977 gpm, 61.7 L/s

<b>Pump Type</b>	Electric Submersible Pumps	
<b>Motor</b>	<b>Phase</b>	3-Phase
	<b>Type</b>	Induction Motor
	<b>Poles</b>	4 Pole (1750 rpm)
	<b>Insulation</b>	Class F
	<b>Protector</b>	Circle Thermal Protector
	<b>Starter</b>	D.O.L.
<b>Lubricant</b>	Food Grade (ISO VG32)	
<b>Specs.</b>	<b>Impeller Type</b>	Opened
	<b>Shaft Seal</b>	Double Mechanical Seal
		Silicon Carbide VS Ceramic/Carbon
	<b>Bearings</b>	C3 Shielded ball bearings
	<b>Cable</b>	CSA-Certified PVC Jacketed Cables
33 ft (10 m) or longer upon request		
<b>Materials</b>	<b>Pump Casing</b>	Ductile Iron
	<b>Impeller</b>	Chromium Iron
	<b>Motor Frame</b>	Gray Iron
	<b>Motor Shaft</b>	Stainless Steel
	<b>Wear Plate</b>	Chromium Iron
	<b>Agitator</b>	Chromium Iron
<b>Max. Liquid Temperature</b>	40°C (104°F)	
<b>Max. Submersion Depth</b>	20 m (66ft)	
<b>pH Range</b>	pH 5 - pH 8	

